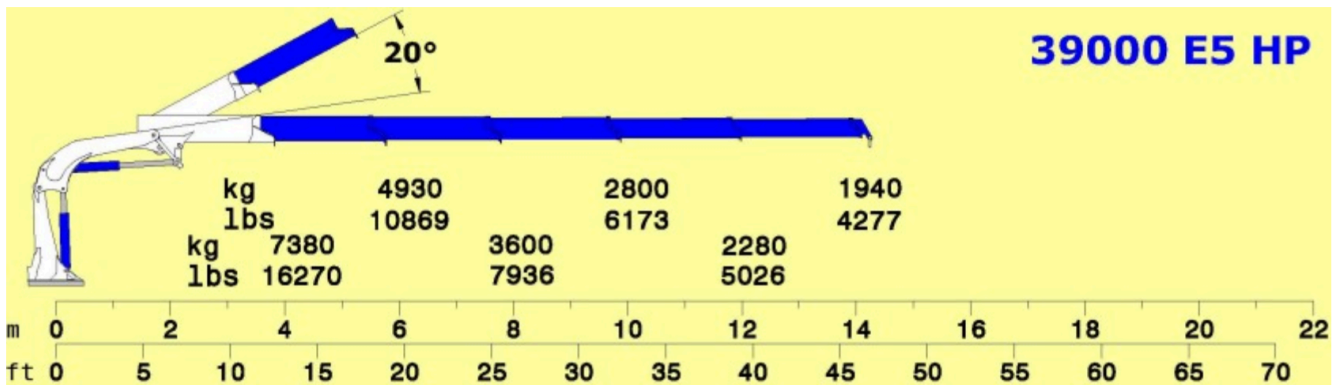


# Cormach 3900 E5 Crane



Technical specifications	Metric system	Imperial Measurement
Static moment at the turret pin	38700 (daN/m)	279971 (lbs/ft)
Hyd. boom length	14.25 (mm)	46' 9" (in)
Length	1220 (mm)	4' 0" (in)
Width	2550 (mm)	8' 4" (in)
Height	2250 (mm)	7' 5" (in)
Weight (without oil and fitting)	4000 (kg)	8818 (lbs)
Lifting capacity	7380 (kg)	16270 (lbs)
Boom length with manual extensions	(mm)	(in)
Slew torque	3700 (daN/m)	26767 (lbs/ft)
Slewing speed	360° - 33 (° - sec)	360° - 33 (° - sec)
Outriggers extension	1500 + 1750 (mm)	4' 11" + 5' 9" (in)
Outriggers width	5630 (mm)	18' 6" (in)
Pump delivery	60 (lit/min)	16
Pressure	315 (bar)	4479 (Psi)
Oil tank capacity	160 (lit)	42 (us gal)

# 39000 E5

